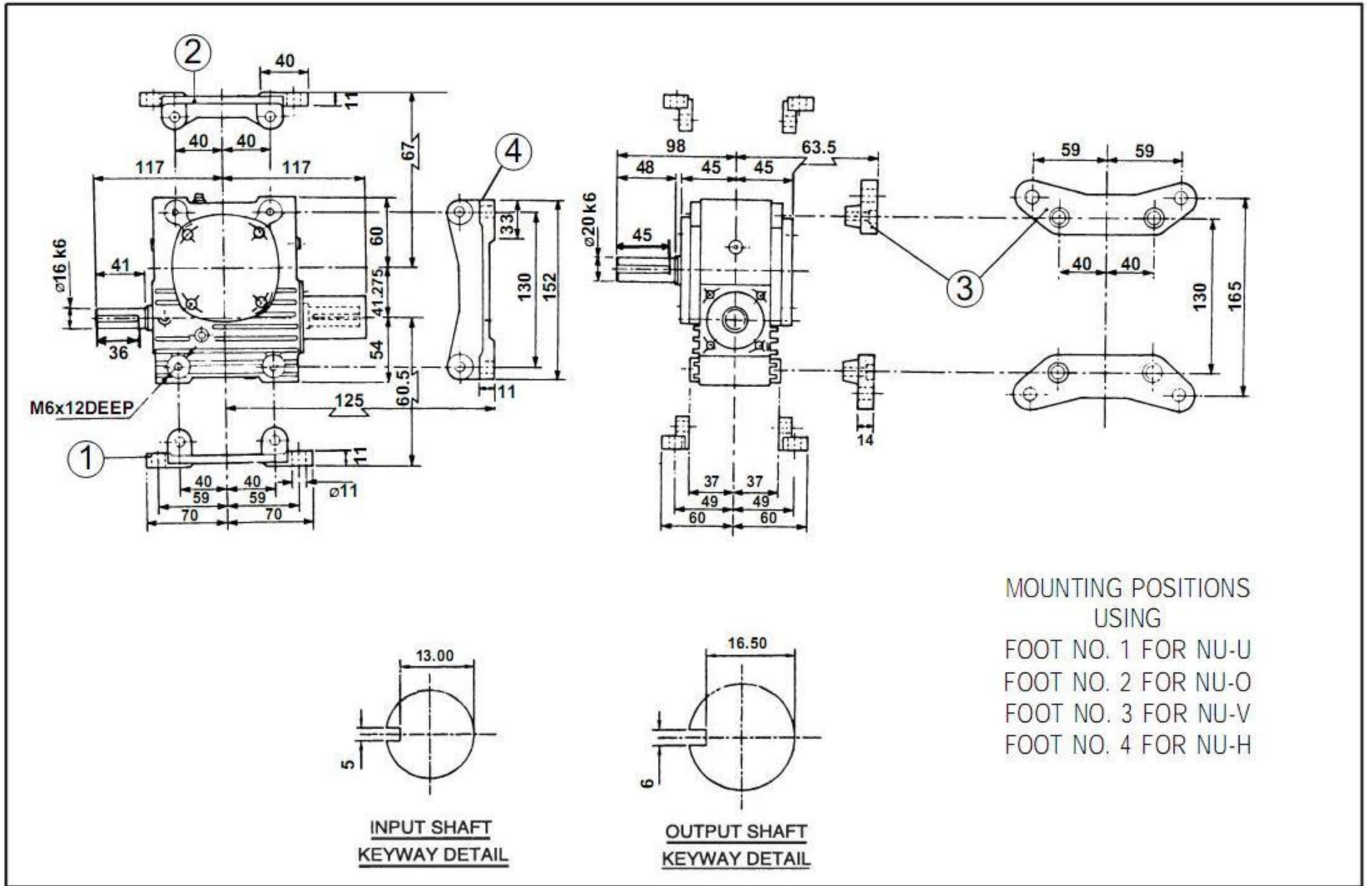
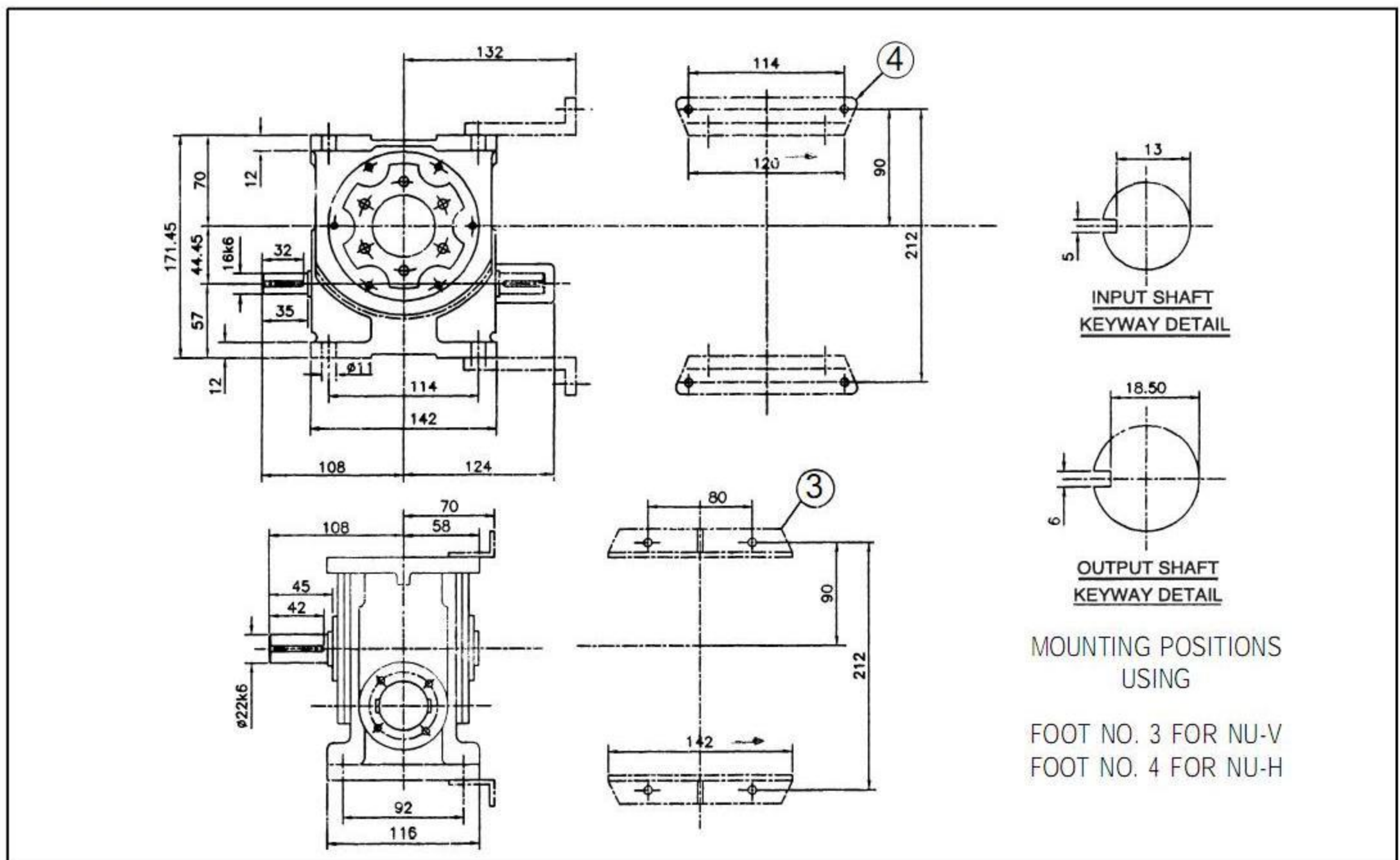




1 5/8 SNU



1 3/4 SNU



Key & Keyways as per IS 2048. Shaft limits up to 58dia.-k6 and above 58 dia.-m6

Authorised Dealers & Stockist :

Estd. Since 1974.



M/S Union Engineering Co.

16, Pankaj 'A', LBS Marg, Opp. Indradeep Society,
Ghatkopar - West. Mumbai - 400 086.

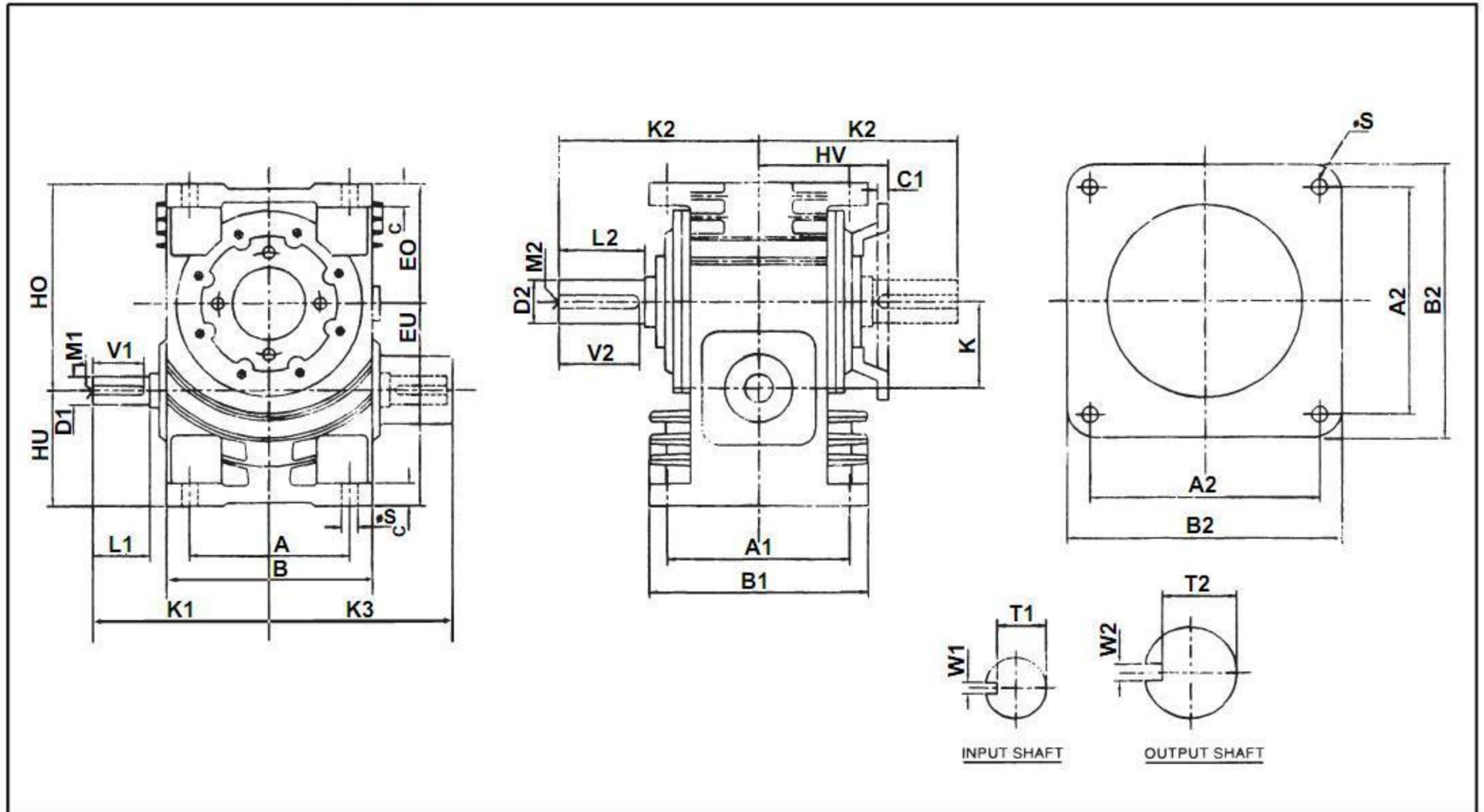
Ph : +91 - 22 - 25133850. Fax : +91 - 22 - 25133850.

Email : unionengg@gmail.com, union_engg@yahoo.co.in.

Website : www.unionengg.in

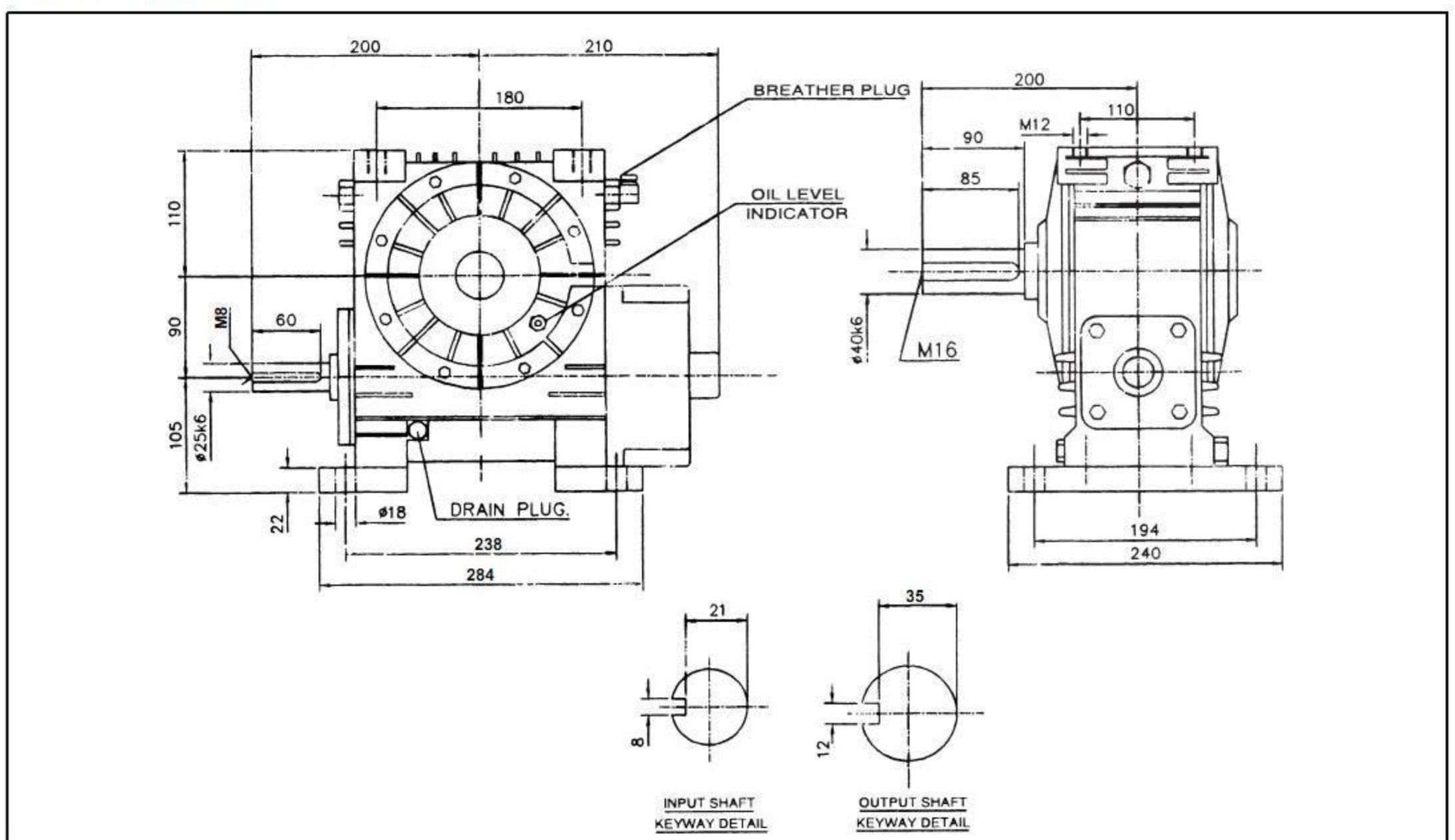


2 TO 3 SNU-U, Q, V



SIZE	A	B	A1	B1	C	A2	B2	C1	φS	HU	EU	HO	EO	HV	K	K1	K2	K3	D1	L1	M1	T1	W1	D2	L2	M2	T2	W2	V1	V2
2 SNU	95	142	100	125	14	120	150	14	11	70	120.8	133.8	83	94	50.8	133	128	140	16	47	-	13	5	25	57	-	21	8	45	55
2 1/2 SNU	105	152	105	132	14	120	150	14	11	70	127.15	142.15	85	100	57.15	142	136	150	22	50	-	18.5	6	25	60	-	21	8	45	55
3 SNU	140	180	160	192	20	200	240	16	14	102	178.20	181.20	105	125	76.20	155	175	165	25	50	MB	21	8	38	75	M12	33	10	45	70

3.54 SNU-U



Key & Keyways as per IS 2048. Shaft limits up to 58dia.-k6 and above 58 dia.-m6

Authorised Dealers & Stockist :

Estd. Since 1974.



M/S Union Engineering Co.

16, Pankaj 'A', LBS Marg, Opp. Indradeep Society,
Ghatkopar - West. Mumbai - 400 086.

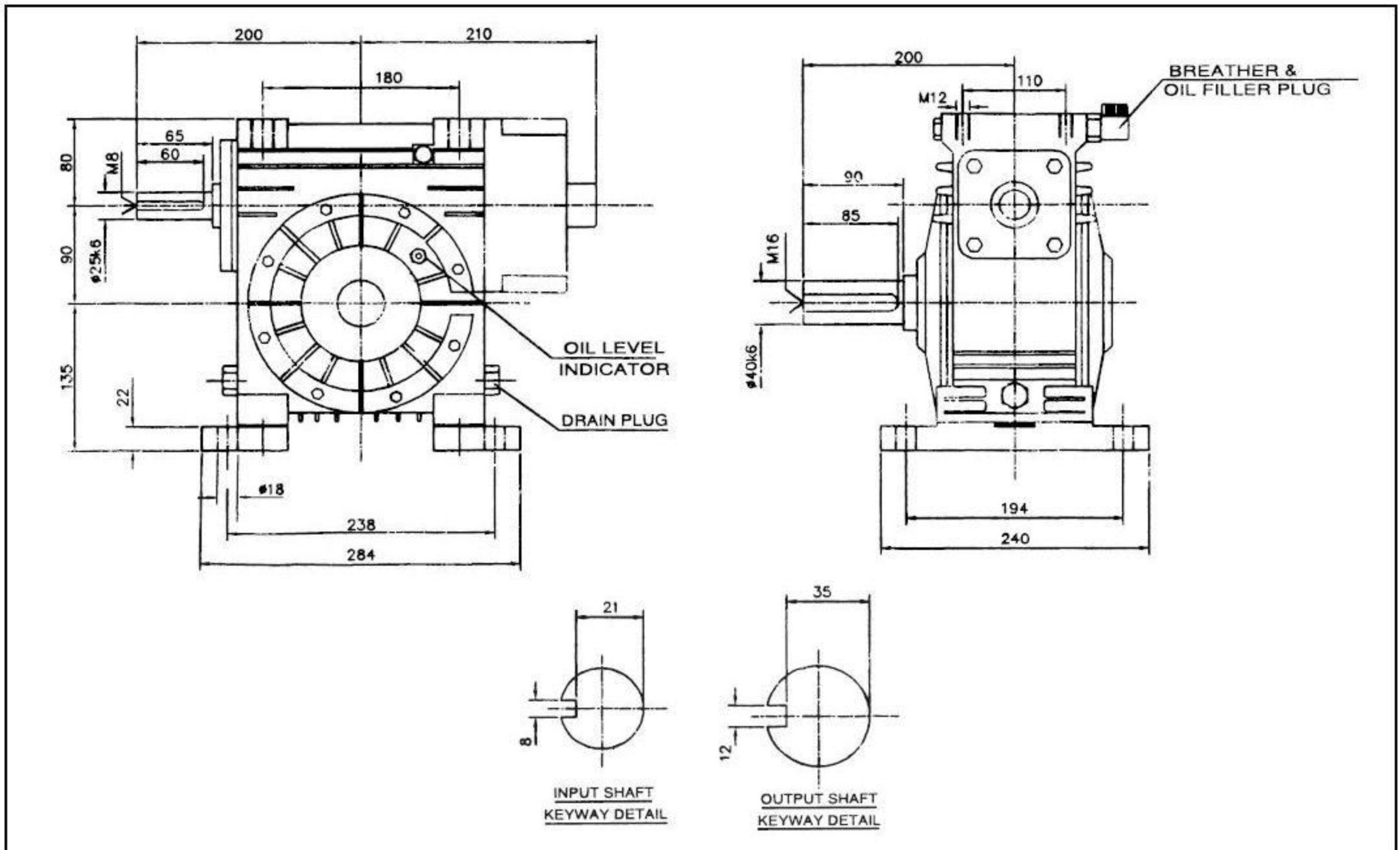
Ph : +91 - 22 - 25133850. Fax : +91 - 22 - 25133850.

Email : unionengg@gmail.com, union_engg@yahoo.co.in.

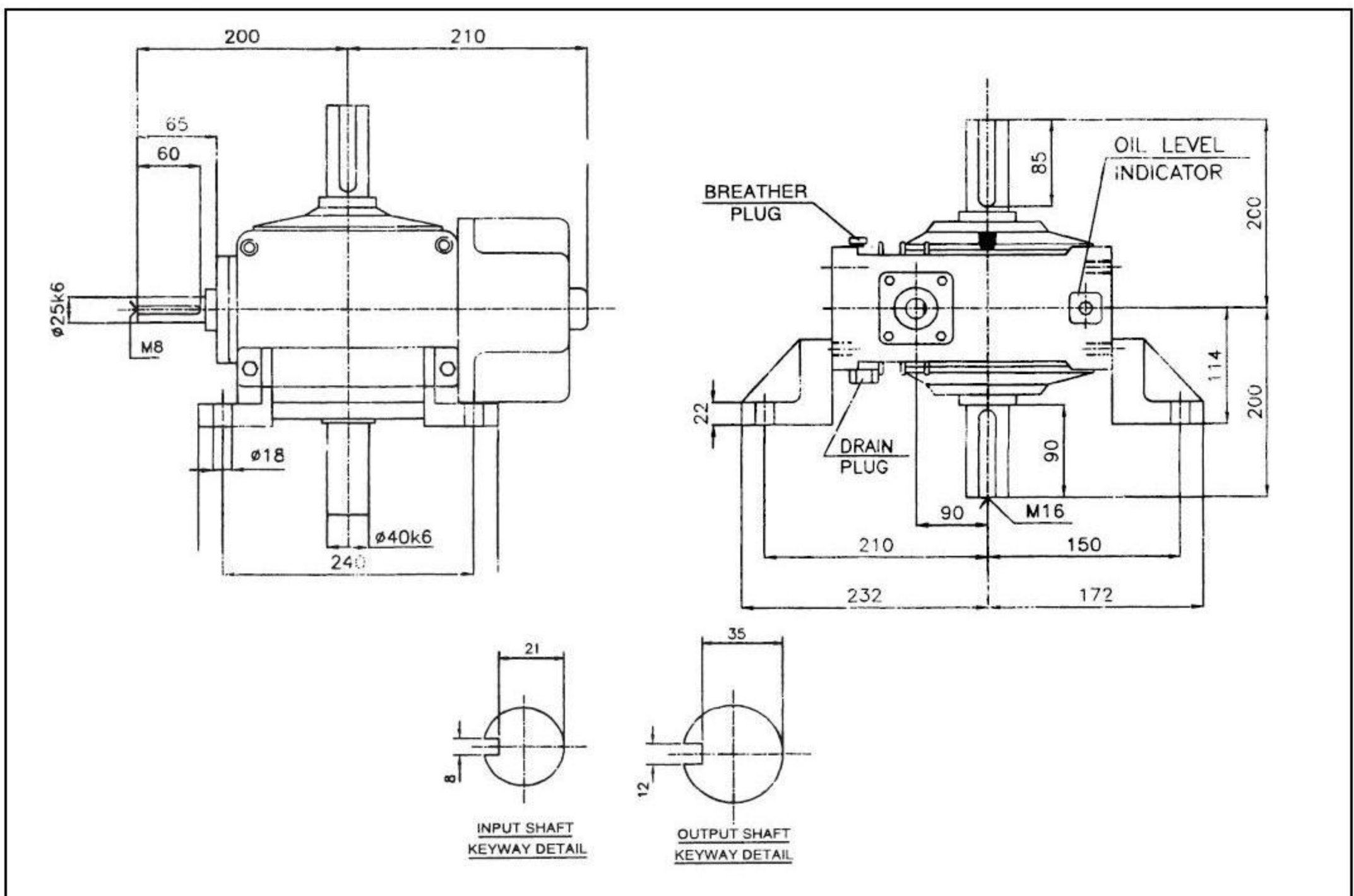
Website : www.unionengg.in



3.54 SNU-O



3.54 SNU-V



Key & Keyways as per IS 2048. Shaft limits up to 58dia.-k6 and above 58 dia.-m6

Authorised Dealers & Stockist :

Estd. Since 1974.



M/S Union Engineering Co.

16, Pankaj 'A', LBS Marg, Opp. Indradeep Society,
Ghatkopar - West. Mumbai - 400 086.

Ph : +91 - 22 - 25133850. Fax : +91 - 22 - 25133850.

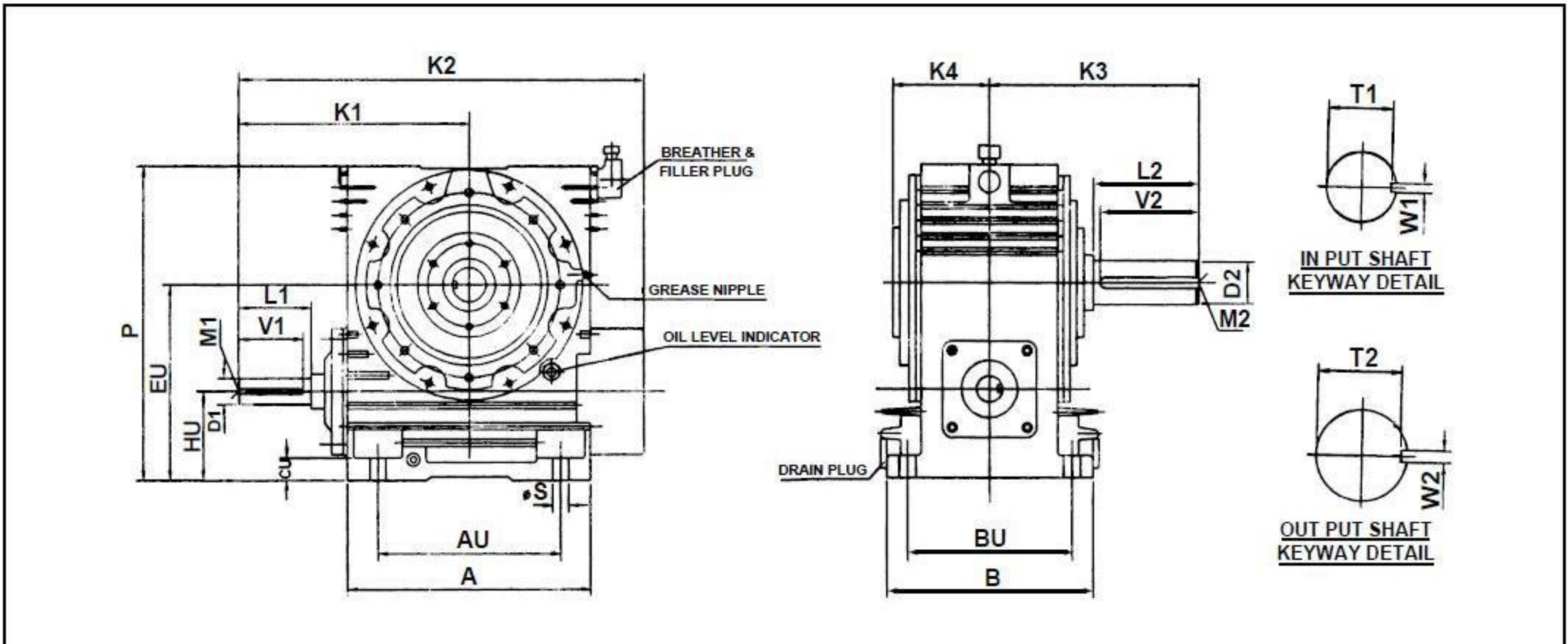
Email : unionengg@gmail.com, union_engg@yahoo.co.in.

Website : www.unionengg.in

4 TO 10.5 SNU

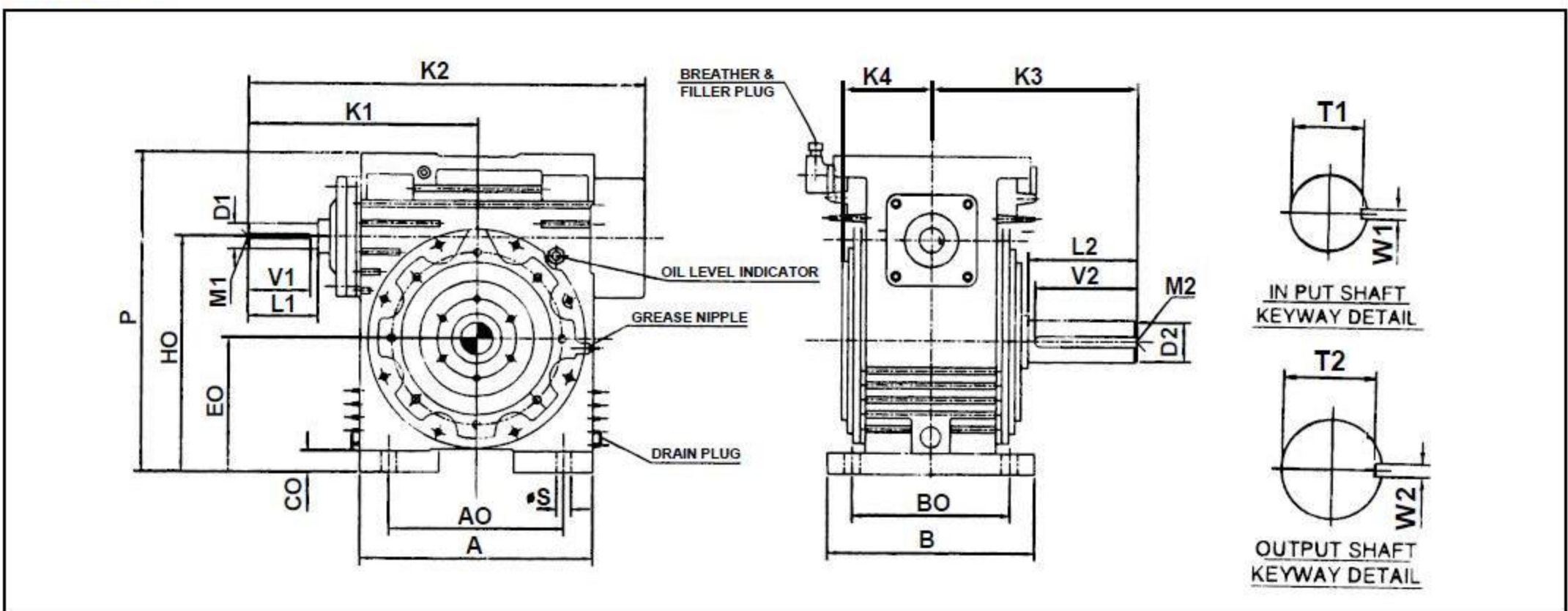


SNU-U



SIZE	A	AU	B	BU	CU	φS	HU	EU	P	D1	L1	V1	M1	T1	W1	K1	K2	D2	L2	V2	M2	T2	W2	K3	K4
4 SNU-U	250	180	200	160	25	18	108	209.6	325	32	65	60	M12	27	10	215	440	45	90	85	M16	39.5	14	215	115
5 SNU-U	300	220	252	200	30	18	118	245	385	35	70	65	M12	30	10	242	492	50	100	95	M16	44.5	14	235	130
6 SNU-U	354	266	302	241	32	23	127	279.4	450	38	75	70	M12	33	10	279	580	58	114	111	M20	52	16	274	155
7 SNU-U	400	306	340	265	36	23	146	323.8	524	40	82	79	M16	35	12	311	656	65	130	127	M20	58	18	287	160
8 SNU-U	440	343	340	265	40	27	146	349.2	574	45	88	85	M16	39.5	14	342	710	70	140	137	M20	62.5	20	312	175
9 SNU-U	490	390	344	282	40	27	154	382.6	635	50	95	92	M16	44.5	14	375	776	75	145	140	M20	67.5	20	325	180
10.5 SNU-U	590	432	430	330	50	33	172	438.7	720	60	115	110	M20	53	18	450	925	80	150	147	M20	71	22	352	200

SNU-O

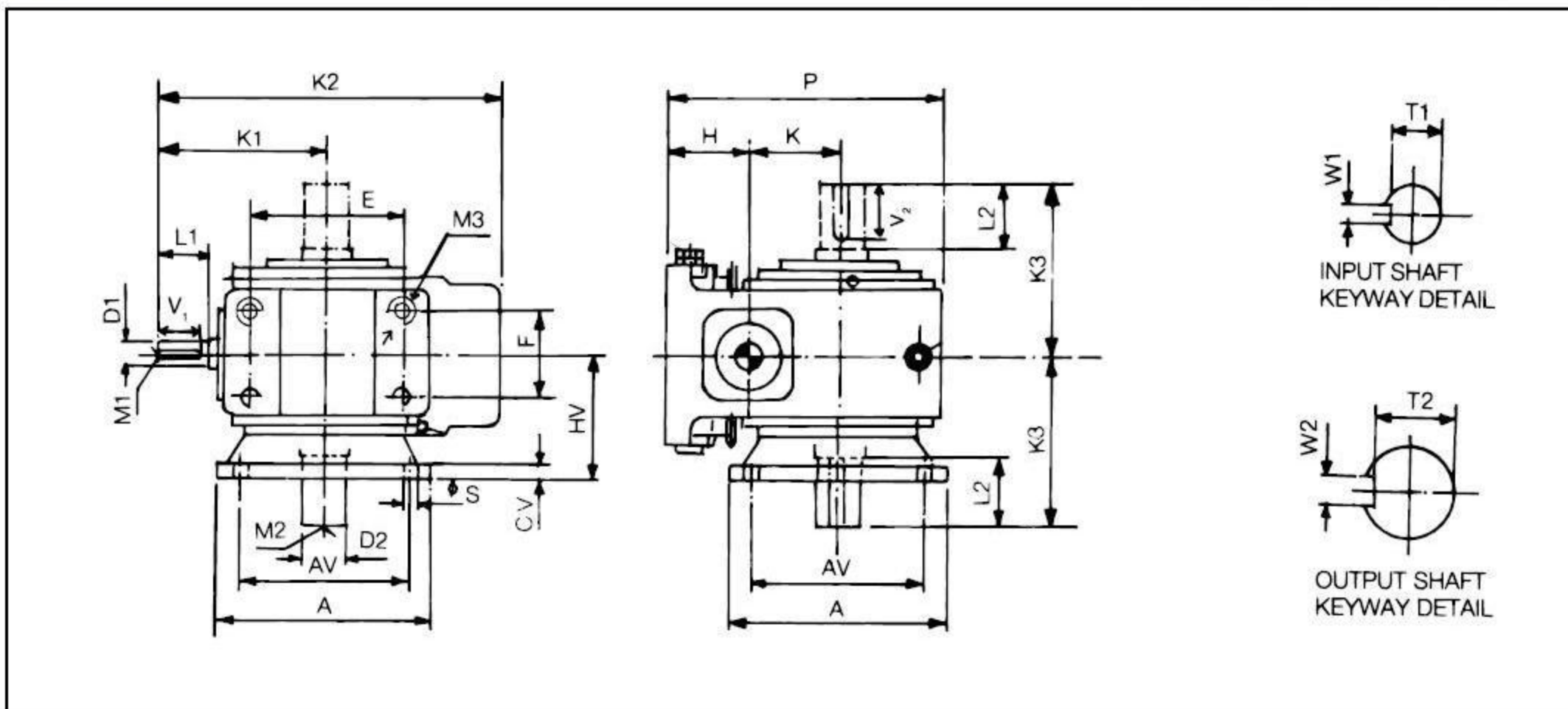


SIZE	A	AO	B	BO	CO	φS	HO	EO	P	D1	L1	V1	M1	T1	W1	K1	K2	D2	L2	V2	M2	T2	W2	K3	K4
4 SNU-O	250	180	240	200	25	18	241.6	140	350	32	65	60	M12	27	10	215	440	45	90	85	M16	39.5	14	215	115
5 SNU-O	300	220	270	230	25	18	292	165	410	35	70	65	M12	30	10	242	492	50	100	95	M16	44.5	14	235	130
6 SNU-O	354	266	310	250	30	23	352.4	200	479.4	38	75	70	M12	33	10	279	580	58	114	111	M20	52	16	274	155
7 SNU-O	400	306	340	266	44	23	421.8	244	568	40	82	79	M16	35	12	311	656	65	130	127	M20	58	18	287	160
8 SNU-O	440	343	340	266	44	27	472.2	269	618	45	88	85	M16	39.5	14	342	656	70	140	137	M20	62.5	20	312	175
9 SNU-O	490	390	414	340	44	27	524.6	296	679	50	95	92	M16	44.5	14	375	776	75	145	140	M20	67.5	20	325	180
10.5 SNU-O	590	432	484	400	50	33	597.7	331	770	60	115	110	M20	53	18	450	925	80	150	147	M20	71	22	352	200

Key & Keyways as per IS 2048. Shaft limits up to 58dia.-k6 and above 58 dia.-m6

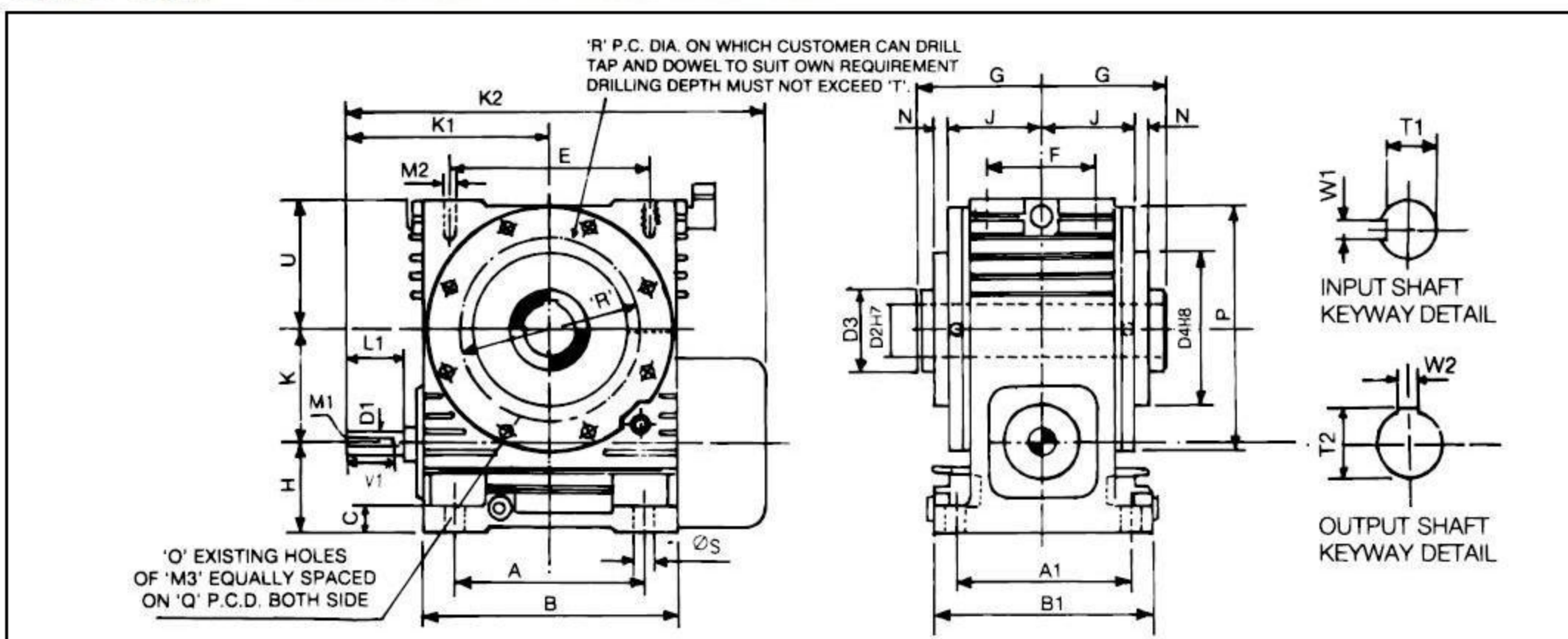


SNU-V



Size	A	AV	CV	φS	HV	H	K	P	D1	L1	V1	M1	T1	W1	K1	K2	D2	L2	V2	M2	T2	W2	K3	E	F	M3
4 SNU-V	280	235	20	18	140	108	101.6	325	32	65	60	M12	27	10	215	440	45	90	85	M16	39.5	14	215	200	100	M16
5 SNU-V	320	260	22	18	185	118	127	385	35	70	65	M12	30	10	242	492	50	100	95	M16	44.5	14	235	240	130	M16
6 SNU-V	340	270	25	23	180	127	152.4	450	38	75	70	M12	33	10	279	580	58	114	111	M20	52	16	274	280	150	M20
7 SNU-V	400	320	40	27	200	146	177.8	524	40	82	79	M16	35	12	311	656	65	130	127	M20	58	18	287	320	150	M20
8 SNU-V	440	360	40	27	220	146	203.2	574	45	88	85	M16	39.5	14	342	710	70	140	137	M20	62.5	18	312	340	180	M24
9 SNU-V	490	410	40	27	240	154	228.6	635	50	95	92	M16	44.5	14	375	776	75	145	140	M20	67.5	20	325	386	180	M24
10.5 SNU-V	560	480	40	33	260	172	266.7	720	60	115	110	M20	53	18	450	925	80	150	147	M20	71	22	352	440	220	M30

SNU-SM SHAFT MOUNTED WORM GEAR UNIT

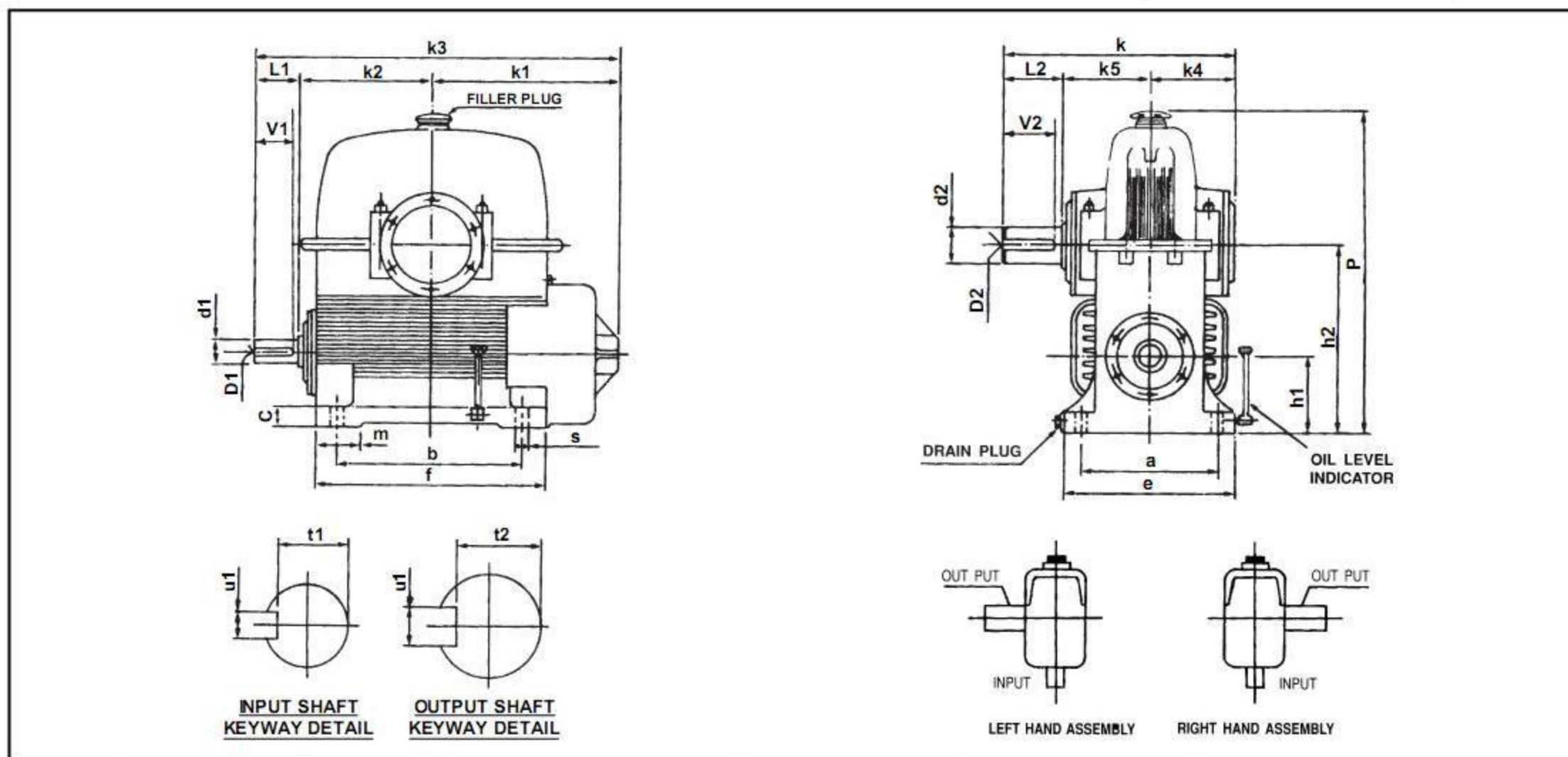


SIZE	K	H	U	K1	K2	G	J	N	D1	L1	V1	M1	T1	W1	D2	T2	W2	D3	D4	P	A	A1	B	B1	C	S	E	F	M2	O	Q	M3	R	T
2 1/4 SNU-SM	57.15	70	85	142	295	75	58	4	22	50	45	-	18.5	8	30	33.3	8	50	105	135	105	105	152	132	14	11	105	105	φ11	8	124	M8	-	-
3 SNU-SM	76.2	102	105	155	330	100	80	5	25	50	45	M8	21	8	50	53.8	14	80	138	177	140	160	180	192	20	14	140	160	φ14	8	158	M8	-	-
4 SNU-SM	101.6	108	115	215	440	115	95	6	32	65	60	M12	27	10	65	69.4	18	95	146	222	180	160	250	200	25	18	200	100	M16	8	200	M8	165	20
5 SNU-SM	127	118	140	242	492	145	115	15	35	70	65	M12	30	10	70	75.1	20	105	195	272	220	200	300	252	30	18	240	130	M16	8	250	M10	210	20
6 SNU-SM	152.4	127	170	279	580	165	132	20	38	75	70	M12	33	10	75	80.1	20	105	205	330	266	241	354	302	32	23	280	150	M20	8	305	M10	250	20
7 SNU-SM	177.8	146	200	311	656	160	132	8	40	82	79	M16	35	12	80	85.6	22	120	222	390	306	266	400	340	36	23	320	150	M20	12	355	M10	280	20
8 SNU-SM	203.2	146	225	342	710	180	148	8	45	88	85	M16	39.5	14	90	95.6	25	130	263	445	343	266	440	340	40	27	340	160	M24	12	405	M12	318	20
9 SNU-SM	228.6	154	252.4	375	776	190	157	8	50	95	92	M16	44.5	14	95	100.6	25	140	266	492	390	282	490	344	40	27	386	180	M24	12	460	M12	330	20
10.5 SNU-SM	266.7	172	281.3	450	925	205	180	8	60	115	110	M20	53	18	100	106.6	28	152	292	540	432	330	590	430	50	33	440	220	M30	12	510	M12	380	20

Key & Keyways as per IS 2048. Shaft limits up to 58dia.-k6 and above 58 dia.-m6

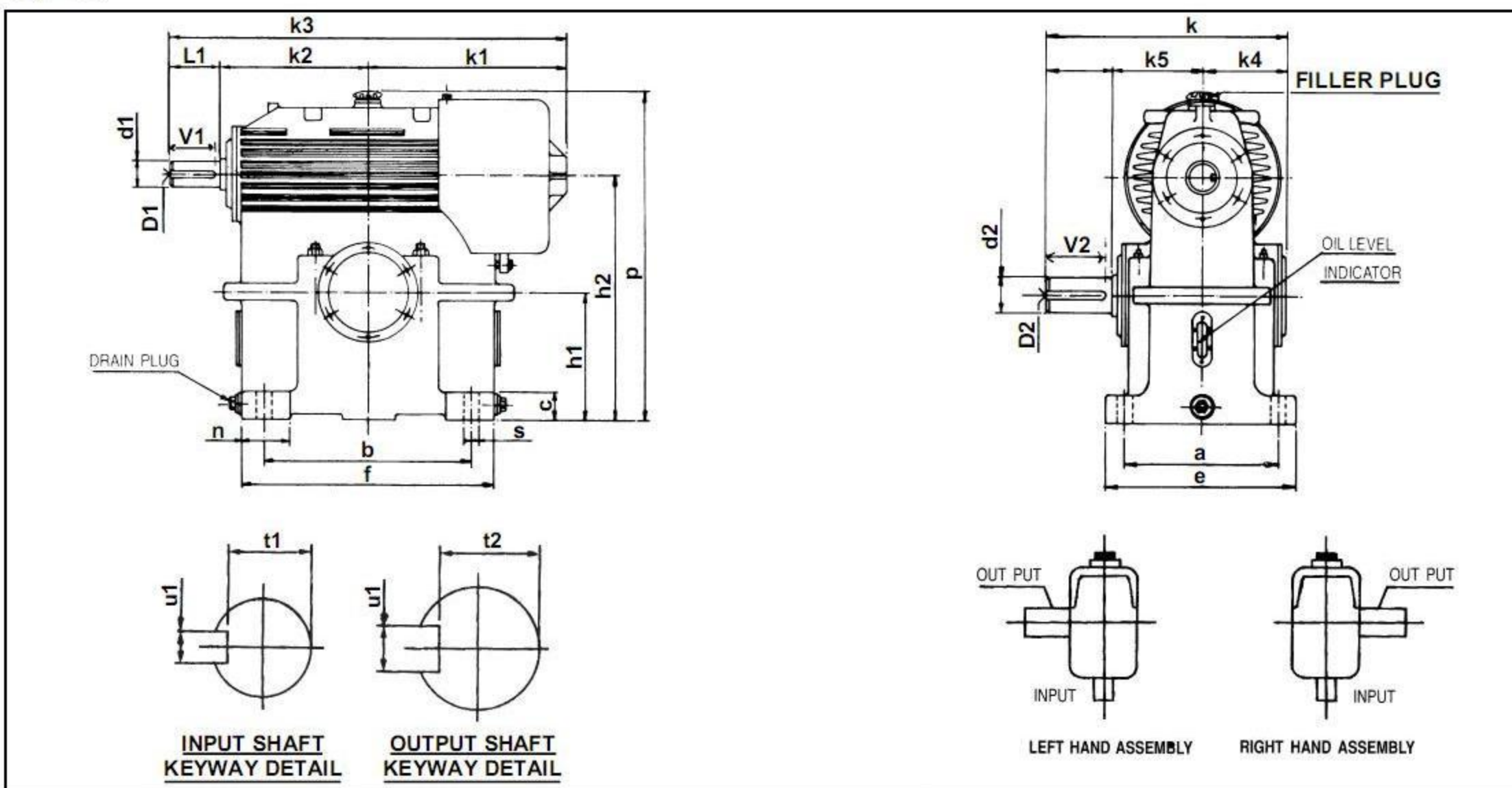


SFU



SIZE	GEARBOX MOUNTING DETAIL							CLEARANCE DIMENSIONS									SHAFT END DETAILS											
	a	b	c	e	f	m	s	h1	h2	k	k1	k2	k3	k4	k5	P	d1	L1	V1	t1	u1	D1	d2	L2	V2	t2	u2	D2
12 SFU	368	521	55	540	690	150	33	190.5	495.3	589	505	360	990	208	216	860	60	125	120	53	18	M20	85	165	160	76	22	M20
14 SFU	432	597	65	560	820	180	33	216	571.6	635	545	450	1135	215	220	970	80	140	135	71	22	M20	110	200	195	100	28	M24
17 SFU	508	762	75	600	920	170	33	254	685.8	825	650	520	1340	300	310	1185	85	170	160	78	22	M20	135	215	210	123	36	M30

SFO



SIZE	GEARBOX MOUNTING DETAIL							CLEARANCE DIMENSIONS									SHAFT END DETAILS											
	a	b	c	e	f	m	s	h1	h2	k	k1	k2	k3	k4	k5	P	d1	L1	V1	t1	u1	D1	d2	L2	V2	t2	u2	D2
12 SFO	440	530	55	540	630	125	33	330	634.8	589	500	360	985	208	216	819	60	125	120	53	18	M20	85	165	160	76	22	M20
14 SFO	470	620	65	560	770	150	33	395	750.6	738	610	450	1200	258	280	952	80	140	135	71	22	M20	110	200	195	100	28	M24
17 SFO	510	750	75	600	920	170	33	460	891.8	825	650	520	1340	300	310	1146	85	170	160	76	22	M20	135	215	210	123	36	M30

Authorised Dealers & Stockist :

Estd. Since 1974.



M/S Union Engineering Co.

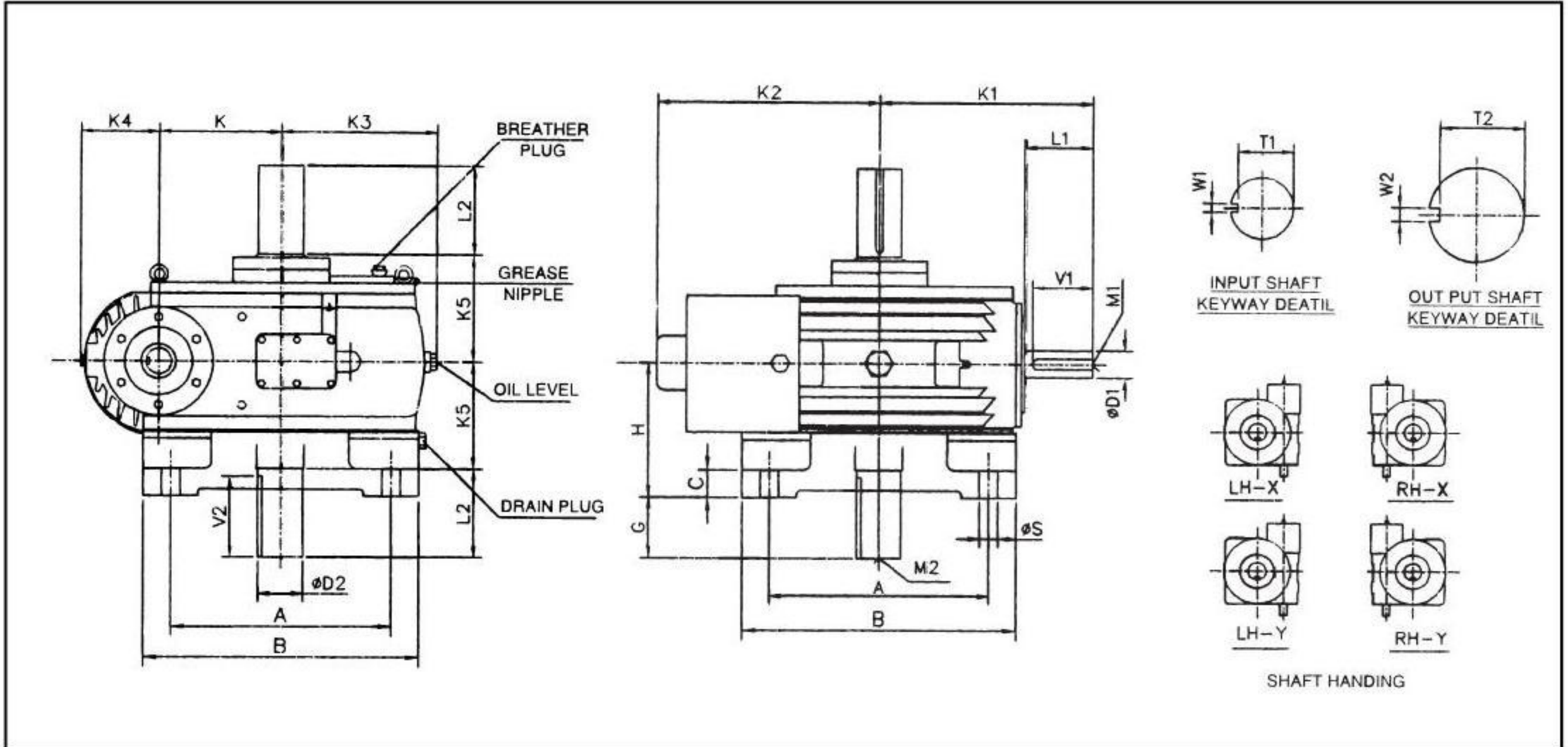
16, Pankaj 'A', LBS Marg, Opp. Indradeep Society,
Ghatkopar - West. Mumbai - 400 086.

Ph : +91 - 22 - 25133850. Fax : +91 - 22 - 25133850.

Email : unionengg@gmail.com, union_engg@yahoo.co.in.

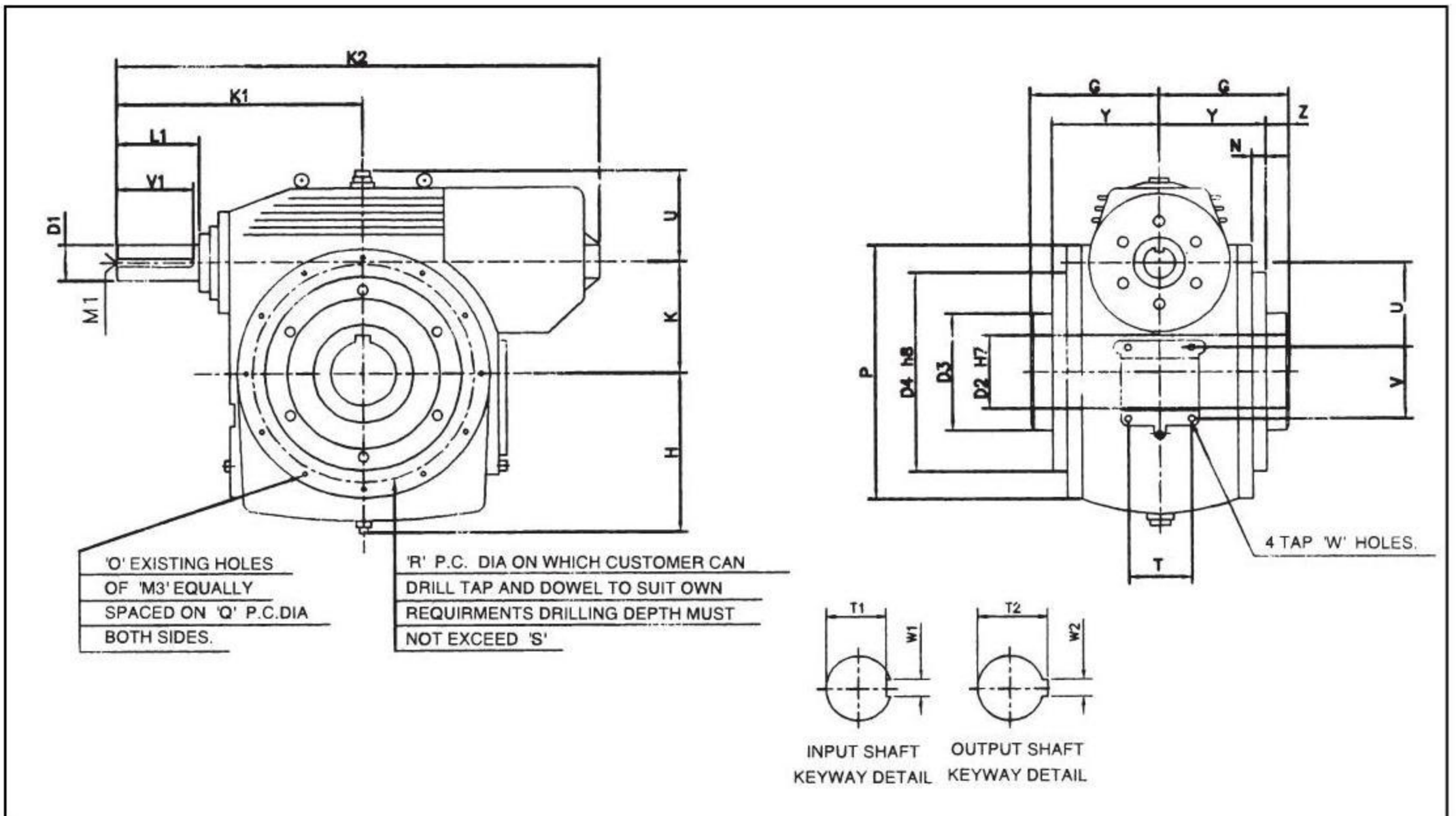
Website : www.unionengg.in

SFV



SIZE	A	B	C	ΦS	H	K1	K2	K3	K	K4	K5	G	D1	L1	V1	T1	W1	M1	D2	L2	V2	T2	W2	M2
12 SFV	500	620	60	33	280	485	500	350	304.8	175	216	101	60	125	120	53	18	M20	85	165	160	76	22	M20
14 SFV	580	700	65	33	300	590	545	419	355.6	200	220	120	80	140	135	71	22	M20	110	200	195	100	28	M24
17 SFV	800	1000	75	40	345	690	651	520	431.8	238	310	180	85	170	160	76	22	M20	135	215	210	123	36	M30

SSM



SIZE	K	H	U	K1	K2	D1	L1	V1	M1	T1	W1	D2	T2	W2	D3	D4	P	G	N	Y	Z	O	Q	M3	R	S	T	U	V	W
12 SSM	304.8	380	226	485	990	60	125	120	M20	53	18	110	116.4	28	180	360	640	220	10	200	20	12	605	M12	450	25	140	225	175	M24
14 SSM	355.6	450	250	590	1180	80	140	135	M20	71	22	140	148.4	36	185	400	770	240	10	225	15	12	720	M16	530	25	140	226	235	M24

Key & Keyways as per IS 2048. Shaft limits upto 58dia.-k6 and above 58 dia.-m6