



**COOLING TOWER MOTORS**

INTRODUCTION

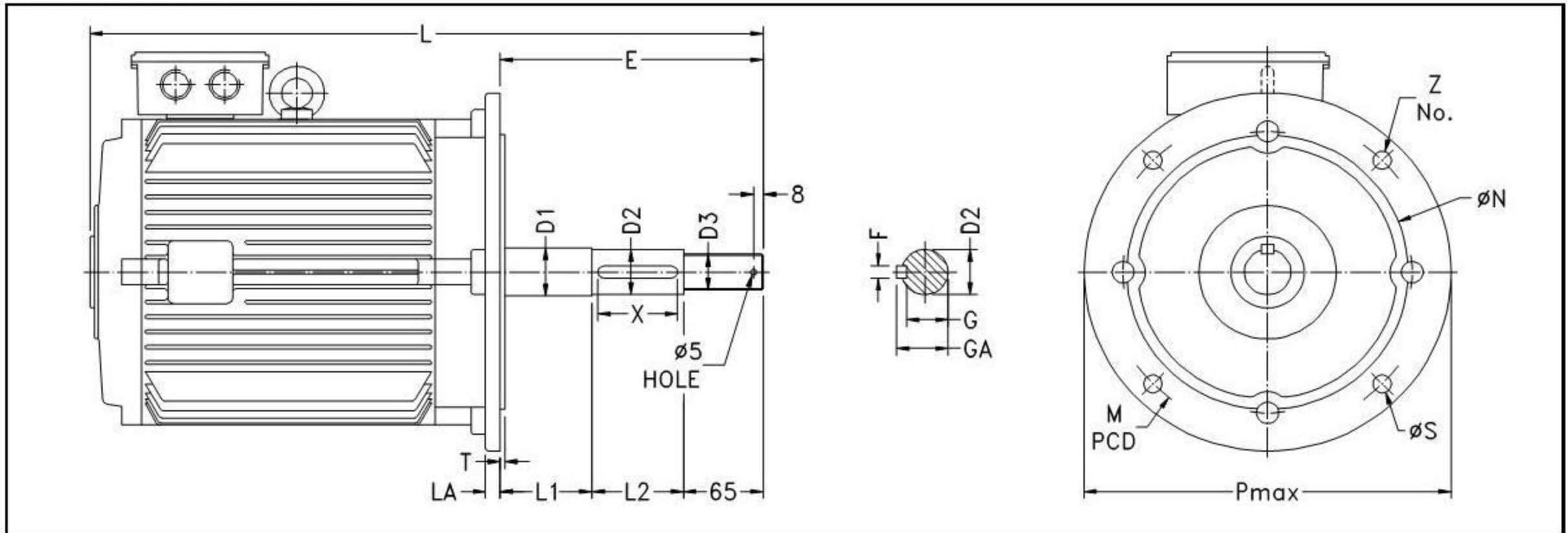
'HINDUSTAN' Cooling tower motors are specially designed flange mounted motors in totally enclosed construction to suit air conditioning & refrigeration industries. They are provided with special long shaft construction with external threaded end to directly mount the fan blades. This also helps in the better cooling of the motor. Motors are compact in design & less in weight to facilitate easy maintenance. They are available as standard catalogue designs or as custom built.

RANGE

Power : 0.37 to 22.0 kW  
Polarity : 4P, 6P, 8P, 10P & 12P  
Mounting : B5 flange mounted  
Frame size : 71 to 280  
Voltage : 415V ± 10% or as required  
Frequency : 50Hz ± 5% or as required  
Ambient : 45°C.  
Altitude : upto 1000m above m. s. l.  
Enclosure : Totally enclosed (TE)  
Protection : IP55  
Insu. class : Class F insulation with temp. rise limited to class B.



**MECHANICAL DIMENSIONS**



Frame	D1	D2	D3	F	G	GA	L1	L2	E	P max	M PCD	øN	øS	Z No.	T	LA	X	L
71	15	14	M12	5	11	16	50	40	155	160	130	110	10	4	3.5	9	35	331
80	20	19	M16	6	15.5	21.5	50	55	170	200	165	130	12	4	3.5	10	45	368
90S	25	24	M16	8	20	27	50	55	170	200	165	130	12	4	3.5	10	45	380
90L	25	24	M16	8	20	27	50	55	170	200	165	130	12	4	3.5	10	45	405
100L	30	28	M24	8	24	31	50	55	170	250	215	180	15	4	4	11	45	432
112M	30	28	M24	8	24	31	50	55	170	250	215	180	15	4	4	11	45	446
132S	40	38	M30	10	33	41	75	75	215	300	265	230	15	4	4	12	65	515
132M	40	38	M30	10	33	41	75	75	215	300	265	230	15	4	4	12	65	553
160M	45	42	M30	12	37	45	75	75	215	350	300	250	19	4	5	13	65	614
160L	45	42	M30	12	37	45	75	75	215	350	300	250	19	4	5	13	65	658
180M	50	48	M30	14	42.5	51.5	100	120	285	350	300	250	19	4	5	13	110	727
180L	50	48	M30	14	42.5	51.5	100	120	285	350	300	250	19	4	5	13	110	765
200L	60	55	M30	16	49	59	100	120	285	400	350	300	19	4	5	15	110	846
225MX	65	60	M30	18	53	64	100	120	285	450	400	350	19	8	5	16	110	850
250MX	75	65	M36	18	58	69	100	120	285	550	500	450	24	8	5	18	110	920
280MX	85	75	M36	20	68	80	100	120	285	550	500	450	24	8	5	18	110	1025

Electrical performance for Cooling Tower 3 Phase Sq. cage induction motors suitable for 415V±10%, 50Hz±5%, ambient temperature 45°C, Class 'F' insulation with class B temp. rise, IP 55 protection, totally enclosed (TE) construction, continuous (S1) duty.